

# LASER MARKING

Solution by *es fLY*

## Innovative laser marking

The *es fLY* laser range has been developed by ES TECHNOLOGY teams of laser machines design specialists. These lasers contain the innovative and well tried Ytterbium fibre laser technology leading to a stable and high quality beam. Characteristics that make them particularly effective for many applications.

## Industrial design

Like every laser manufactured by ES TECHNOLOGY, the *es fLY* range lasers are proposed with industrial design. That's why they can be perfectly integrated into your production line, but they can also be used as stand alone laser machines.



## Cost effective solution

The unique solutions developed by our teams guarantee high performance, and provide easy-to-use and highly flexible lasers. Thanks to original technical solutions, ES TECHNOLOGY is able to offer very competitive prices, lower than those offered by our competitors.

## Quality certified

To ensure you a perfect quality, ES TECHNOLOGY uses the best components to build its lasers.

**Industrial Laser throughout the World**



## es FLY - COMPACT AND ROBUST

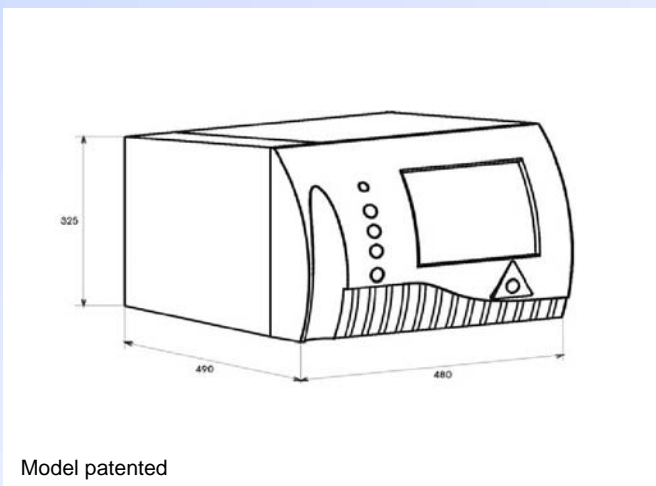
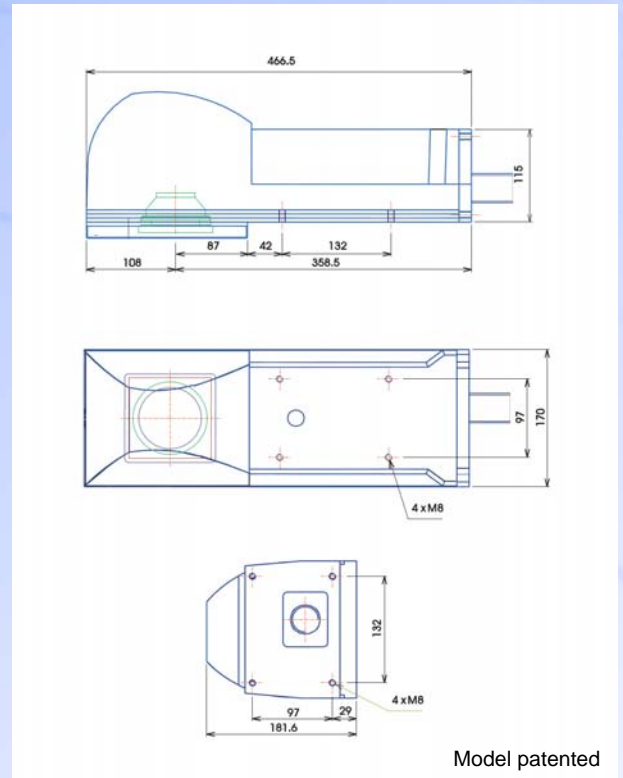
Technologies used for the es FLY lasers design, allow us to offer a very compact laser marking system and therefore very easy to integrate into production lines. However, es FLY lasers may also fit for tabletop mounting and job shop applications. The laser head can be mounted either vertically or horizontally and only weighs 9 kilograms. The control unit is also compact. Its front side with a touch screen and working controls can be separated to be intergrated on a production machine.

## es FLY - A COMPLETE RANGE OF PRODUCTS

The es FLY range lasers are available in OEM version, in desktop version or in Class 1 marking station version. Each version is proposed with average powers of 10, 20, 30 or 50 watts.

## es FLY - MAINTENANCE FREE LASER MARKING

With an MTBF higher than 100 000 hours, the es FLY laser is ideally suited for maintenance free, 24 hours per day applications. This laser is extremely easy to use, very reliable and has low running costs with no consumables except for electrical consumption.



## TECHNICAL SPECIFICATIONS

Power	10, 20, 30 or 50 W
Wavelength	1060 ou 1090 nm
Operating mode	continuous or pulsed
Pulse frequency	from 20 to 200 kHz
Marking field	from 100 x 100 to 300 x 300 mm
Beam diameter	32 to 84 $\mu\text{m}$
Moving speed	7 $\text{m}\cdot\text{s}^{-1}$
Marking speed	600 $\text{characters}\cdot\text{s}^{-1}$ (characters height 1 mm)
Operator interface	10 inch touch screen
Cooling system	air
Power requirements	350 W max
Safety shutter	
Emergency stop	
Class 4 laser	
Connections	: 3 USB ports, PS2, Ethernet, additional connections for monitor, keyboard and mouse
Complete marking software	: multilingual es MARK ; simple and user-friendly CAO/DAO ; files creation, importation and saving ; powerful software allowing the marking of every kind of datas.

[www.eslaser.com](http://www.eslaser.com)



**ES TECHNOLOGY SA**  
 ZI La Rivière  
 F-33850 Léognan  
 Tel. : 33 (0) 556 64 40 29  
 Fax : 33 (0) 556 64 44 20  
 E-mail : [contact@eslaser.com](mailto:contact@eslaser.com)